

Lettrines / Passe partout

34-01

34x33 mm



Saint-André (de), Pierre

81-01 Q [¶2]

34-02

34/33x34/33 mm

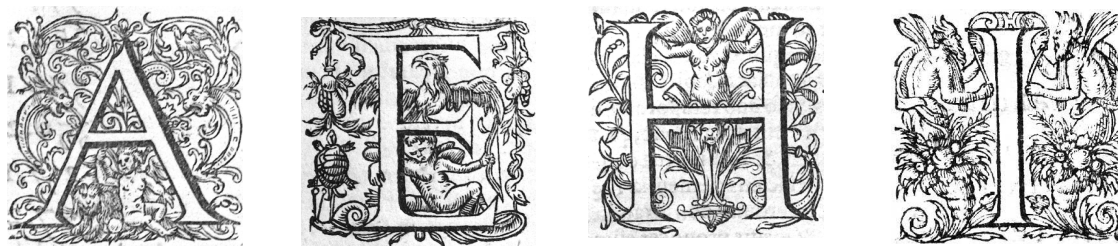


Saint-André (de), Pierre

81-01 B [*2], N [Dd1], P [¶5.v°]

31-01

31x31 mm



Saint-André (de), Pierre

80-11 I [¶2]

81-01 A [*4.v°], E [†2, aa1], H [o5.v°]

29-01

29x30 mm

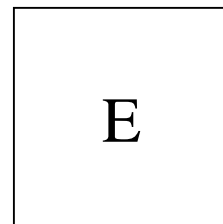


Saint-André (de), Pierre

81-01 O [A1]

29-02

29x29 mm



Saint-André (de), Pierre

79-03 E [A2]

29-03

29x29 mm



Saint-André (de), Pierre

80-10 C [t.2 (aij)], L [t.1 (ōij.v°, Aj)], S [t.1 (âij)]



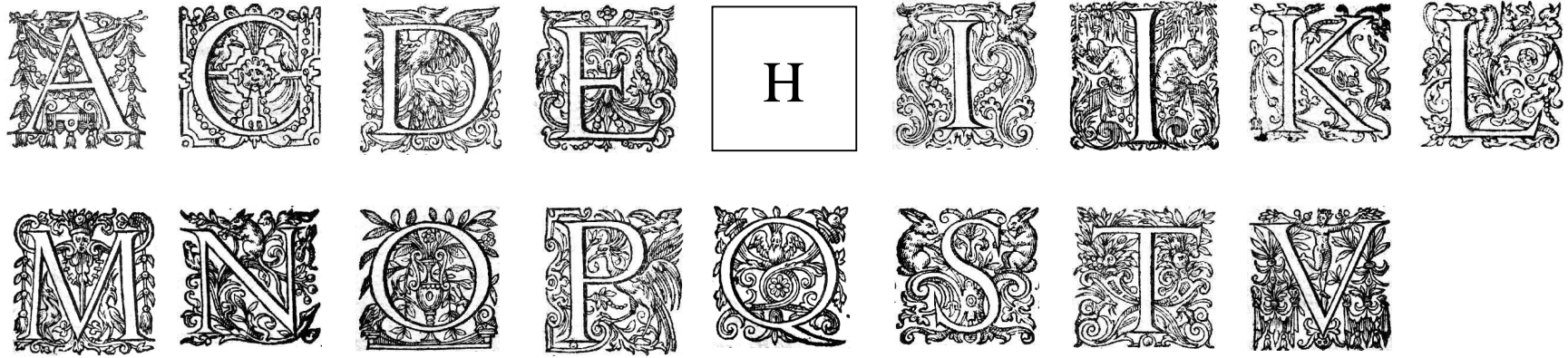
27-01

27x29 mm



Saint-André (de), Pierre

81-01 C [a1]



Saint-André (de), Pierre

80-01 A [K3, T8, Z7.v°], C [E4, O1], D [L7.v°, Cc2], E [H5, P8, Hh2, Kk1, Ll3.v°], K [C3.v°], N [Ff4.v°], O [Dd7.v°], P [A2, Mm8], Q [F7.v°], T [S1.v°], V [X5.v°]

80-04 C [C2.v°], M [N6.v°], N [I8.v°, Ee4.v°], O [S3], Q [A2, H7], S [G4, Ll2], V [Aa3.v°]

80-07 C [O8, R5, Aa3.v°], E [A2], H [H1.v°], I [A2.v°], M [B2.v°], N [F4, V5], Q [M8, Y2, Cc4], V [L1]

80-08 C [A2], E [Gg3.v°], L [R6.v°], M [Bb5], Q [G6, N1, Q5], S [T2.v°], V [I7]

80-09 A [N7], O [I5.v°], Q [A2]

81-02 I [Aij]

81-03 E [*iij], I [Bbiiij], S [avij], V [*ij]

81-04 I [a2]

[Saint-André, Pierre pour] Vignon, Eustache

80/81-01 E [Aj], M [ij], Q [ij]

20-01

20x20 mm



Saint-André (de), Pierre

79-02 **Q** [A1], **V** [¶2]

79-04 **O** [B1], **Q** [A2]

79-05 **P2** [A1]

80-08 **Q** [C7.v°], **S** [V8.v°]

80-09 **E** [Q6], **P1** [F8], **Q** [D7, L5.v°]

80-10 **A** [t.1 (Ccvj.v°), t.2 (yvij.v°)], **C1** [t.1 (Gvij.v°), t.2 (iii.iiij.v°)], **C2** [t.1 (Nnvij, Ssij)], **E** [t.1 (Zzvj.v°)], **I** [t.1 (èvij)], **L1** [t.1 (mij.v°)], **L2** [t.1 (V.iiij, Hhvj.v°, LLij), t.2 (gvj, eej, xxvj.v°, dddij, pppiiij)], **M** [t.1 (EEvij.v°)], **P1** [t.1 (Nij.v°)], **P3** [t.1 (QQvij)], **T** [t.2 (kkvij, qqiiij)]

80-11 **P2** [A1]

81-03 **C** [ovj, Fiiij.v°]

17/16-02

17/16x17/16 mm



Saint-André (de), Pierre

79-01 C1 [A6], P1 [A2, D4.v°], S1 [G2]

79-03 H [B5, C2], I1 [C2.v°], M [D8], P1 [F7.v°], Q1 [A5, E4.v°]

80-10 A1 [t.1 (Aavij, Mmj, Mmvij, Qqij.v°, Ttvij.v°), t.2 (fj.v°)], A2 [t.1 (Biiij, Ciiij.v°, Fvij.v°, Lvij.v°, Lvj, Ffij, Kkvj, AAvij.v°, YYij), t.2 (hij.v°, svij, vvv.j)], C2 [t.1 (Cvij, Eiiij.v°, Gvij.v°, Kvij.v°, Lvij.v°, Mvij.v°, Ddvij.v°), t.2 (aaaiv.v°)], D1 [t.1 (Kvij), t.2 (riiij.v°)], D2 [t.1 (Kv, Lvij.v°)], I2 [t.2 (oiiij)], L [t.1 (Lvij.v°, Nvij.v°)], P2 [t.1 (TTij)], Q2 [t.1 (Bvij)], R [t.1 (Hhij.v°)], T [t.1 (Fiiij.v°, Mj)], V [t.1 (Piiij)]

81-01 S2 [kk1]

81-03 A1 [cj.v°], D1 [Fij]

17/16-01

17/16x17/16 mm



Saint-André (de), Pierre

81-01 A [*3, L1, o6, qq1], C [o2.v°], Q [fi2.v°]

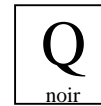
15-01 15x14 mm



Saint-André (de), Pierre

80-10 C [t.1 (Gij.v°)]

13-01 13x13 mm



Saint-André (de), Pierre

81-04 Q [a5]

13-02 13x13 mm



Saint-André (de), Pierre

79-01 E [D6], I [C3]

80-10 C [t.2 (fvj.v°)], E [t.1 (Ggij)], L [t.1 (KKij.v°), t.2 (dvij)], N [t.1 (Hhv)]

81-03 E [Bbiiij], L [aj], M [Aavj.v°], N [oiiij]

11-01

11x13 mm



Saint-André (de), Pierre

80-10 **A** [t.1 (Kvij.v°)], **C** [t.1 (Lv, Ffvij.v°, Ggij)], **S** [t.1 (Lv, Ffvj)]

10-01

10x10 mm



Saint-André (de), Pierre

80-10 **A** [t.1 (Kkv.v°)]

10-02

10x10 mm



Saint-André (de), Pierre

80-10 **L** [t.1 (Lv)]

Bandeaux

150-01

150x30 mm



Saint-André (de), Pierre

81-01 *2, A1, ¶ 2, a1, †2

133-01

133x13 mm



Saint-André (de), Pierre

81-01 aa1

77-01

77x19 mm



Saint-André (de), Pierre

79-02 A1

77-02

77x18 mm



Saint-André (de), Pierre

80-10 t.1 [YYij]

74-01

74x9 mm



Saint-André (de), Pierre

79-05 B8

80-01 A2, F7.v°, K3, L7.v°, P8, T8, Z7.v°, Hh2, Ll3.v°

80-04 S3, Aa3.v°, Ee4.v°

80-08 A2

80-11 B8

81-04 a5, f7, o8.v°, z6, I6.v°

74-02

74x9 mm



Saint-André (de), Pierre

80-01 H5, O1, S1.v°, X5.v°, Ff4.v°, Kk1, Nn7.v°

80-10 t.1 [àij]

81-04 h6.v°, m8, C3.v°, S5.v°, Z7, Cc4.v°

72-01

72x17 mm



Saint-André (de), Pierre

81-02 Aij

72-02

72x13 mm



Saint-André (de), Pierre

79-02 D6, G3, K7

72-03

72x9 mm



Saint-André (de), Pierre

79-05 C2.v°, O4.v°, Y7.v°, Z8,
Cc1

80-04 G4

80-07 A2.v°, Aa3.v°

80-09 L5.v°

80-11 C2.v°, O4.v°, Y7.v°, Z8,
Cc1

81-04 d4, l2, F8.v°

71-01

71x7 mm



Saint-André (de), Pierre

79-02 A2.v°, C7.v°, E5, F4, G8,
I1.v°

69-01

69x7 mm



Saint-André (de), Pierre

80-04 C2.v°, I8.v°, Kk2
80-07 B2.v°, F4, H1.v°, M8, O8, Y2
80-08 N1, Q5, R6.v°, T2.v°, V8.v°
80-09 I5.v°

70-01

70x9 mm



Saint-André (de), Pierre

79-05 S4.v°, Y4, Bb6, Ee2
80-10 t.1 [èvij, ùj.v°, V.iiij]
80-11 S4.v°, Y4, Bb6, Ee2
81-04 q2.v°

69-02

69x7 mm



Saint-André (de), Pierre

80-04 H7, N6.v°
80-07 L1, R5, V5, Cc4
80-08 G6, Bb5

68-01

68x6 mm



Saint-André (de), Pierre

- 79-03 C2, D8, E4.v°
- 79-05 G4.v°, V4, Cc3, Ff6.v°
- 80-01 Dd7.v°
- 80-07 A2
- 80-10 t.1 [Gvij.v°, Nij.v°], t.2 [gvj, riiij.v°, yvij.v°, eeij, dddiij, iii.iii.v°]
- 80-11 G4.v°, V4, Cc3, Ff6.v°
- 81-04 v8, Q3.v°

67-01

67x14 mm



Saint-André (de), Pierre

- 79-03 A2
- 80-10 t.1 [Aj, Nnviiij], t.2 [aij]
- 80-11 ¶ 2

67-02

67x13 mm



a



b

Saint-André (de), Pierre

- 79-01 a [A2, D4.v°]
- 79-02 a [¶ 2, ¶ 4.v°, B5.v°, C6, E1, E2, I7, K8.v°]
- 79-03 a [A5]
- 79-04 a [A2, A4.v°, B1]
- 79-05 b [A1]
- 80-10 b [t.1 (Zzviij.v°, EEviij.v°)]
- 80-11 b [A1]
- 81-04 b [a2]

[Saint-André (de), Pierre pour] Eustache Vignon

- 80/81-01 b [¶ ij, Aj]

67-03

67x13 mm



Saint-André (de), Pierre

81-01 li2.v°

67-05

67x6 mm



Saint-André (de), Pierre

80-08 C7.v°, I7

80-09 D7, F8, N7

67-04

67x6 mm



Saint-André (de), Pierre

79-01 C3, D1, G2

79-02 D2, F2.v°, F3.v°, G6, I7.v°, L5, L6, M6.v°, N1

79-03 B5, F7.v°

79-04 N5

79-05 Z3.v°, Bb3.v°

80-10 t.1 [Ssij, LLij, QQviiij], t.2 [miiij.v°, kkvij, qqiiij]

80-11 Z3.v°, Bb3.v°

67-06

67x6 mm



Saint-André (de), Pierre

- 79-05 E5.v°, H1.v°, Q4.v°, X1.v°, Bb2, Gg2, Hh3
- 80-01 C3.v°, E4, Cc2, Mm8
- 80-04 A2
- 80-10 t.1 [ðij.v°, Cevj.v°, Hhvij.v°], t.2 [xxvj.v°, pppiiij]
- 80-11 ¶ 1.v°, E5.v°, H1.v°, Q4.v°, X1.v°, Bb2, Gg2, Hh3
- 81-04 s1.v°, N1, X8.v°

[Saint-André (de), Pierre pour] Eustache Vignon

- 80/81-01 ¶ vj, I.iiij.v°

66-01

66x10 mm



Saint-André (de), Pierre

- 81-01 o2.v°

66-02

66x6 mm



Saint-André (de), Pierre

- 79-01 C5, C7.v°, D6
- 79-02 B2, B4.v°, D2.v°, D4, F6, I4.v°, I8, L2.v°

63-01

63x6 mm



Saint-André (de), Pierre

81-03 *ij, **iiij

61-01

61x8 mm



Saint-André (de), Pierre

79-02 B6, C3.v°, F7.v°, H7, I4

50-01

50x9 mm



Saint-André (de), Pierre

79-02 A6, C5.v°, G1.v°, G7, H3.v°, K1, L3

50-02

50x6 mm



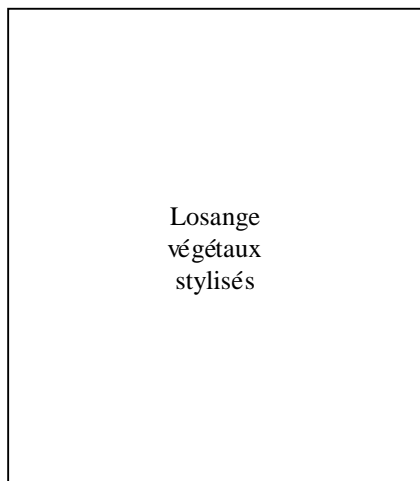
Saint-André (de), Pierre

79-02 H1.v°, K2.v°, L1.v°

Fleurons / Culs-de-lampe

55-01

55x63 mm



Saint-André (de), Pierre

79-05 pgt

33-01

33x31 mm



Saint-André (de), Pierre

80-01 N8.v°, Nn7

80-08 R6

80-09 F7.v°, X4

80-10 t.1 [ðij, új], t.2 [yvij, yyyij]

81-04 Ee7

[Saint-André, Pierre pour] Vignon, Eustache

80/81-01-02 I.iiij, Lij.v°

24-02 24x24 mm



Saint-André, Pierre

80-10 t.1 [YYij]

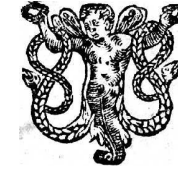
24-01 24x12 mm



Saint-André, Pierre

81-01 li2.v°

22-01 22x20 mm



Saint-André, Pierre

79-03 H1.v°

22-02 22x20 mm



[Saint-André, Pierre, pour] Vignon, Eustache

80/81-01-01 Lij.v°

21-01 21x22 mm



Saint-André, Pierre

81-01 *3, ¶ 5, o2

20-01 20x16 mm



Saint-André, Pierre

80-10 t.1 [LLj.v°], t.2
[pppiij.v°, tttvij.v°]

18-01

18x15 mm



Saint-André (de), Pierre

79-01	G1.v°
79-04	A4, N4.v°
80-01	Mm7.v°

12-01

12x11 mm



Saint-André (de), Pierre

80-10	t.1 [Nnvij.v°]
-------	----------------

10-01

10x3 mm



Saint-André (de), Pierre

79-05	A1
80-04	A1
80-10	t.1 [YYiij], t.2 [pppiij]
80-11	A1
81-02	Aj
81-03	oij, Fj

10-02

10x3 mm



Saint-André (de), Pierre

79-05	B8
80-11	t.1 [àj], t.2 [aj, qqiiij]
80-11	¶ 1, B8
81-03	avij